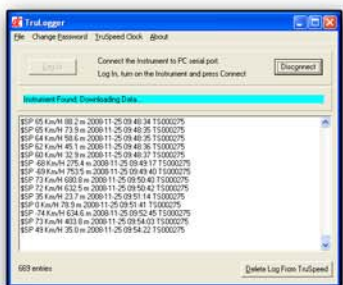




The TruSpeed™ dc is not just a speed enforcement laser, it is a complete asset management tool. Every time you pull the trigger to measure the speed of a vehicle, the internal data collection (dc) software automatically captures and records: the speed, approaching or departing indication, distance to vehicle, time (using a real time clock), date and the laser's serial number.

There is always a need for accountability of everyone's time and activities in the field, so this laser allows supervisors to easily review the usage rate of each laser every time it is deployed. All collected data can also be leveraged when reporting to the public or making recommendations to government officials regarding highway infrastructure issues and budget requests.



Record up to 6,000 speed records at one time and instantly download your data into a PC using TruLogger software. This interface allows you to review and archive all the collected field data and even clear out the TruSpeed's internal memory for future deployment. This is all password protected, which gives limited access to personnel and ensures data integrity.

The TruSpeed dc is a unique speed laser that effectively combines a real time clock, internal memory and LTI's courtroom reliability – all in a lightweight, ergonomic-friendly design at a price point almost any department can afford.



Available TruSpeed dc Upgrades:

- Enhance your scope by adding a 3.5 X magnifier. This allows you to view and target vehicles easier at greater distances.



- Extend your measurement range up to 1200 meters. This simply gives you more flexibility with your stationary position.
- Combat laser jammers with the Anti-Jam/Defeat software. This enables the TruSpeed to detect jammers and still obtain a valid and enforceable speed measurement.

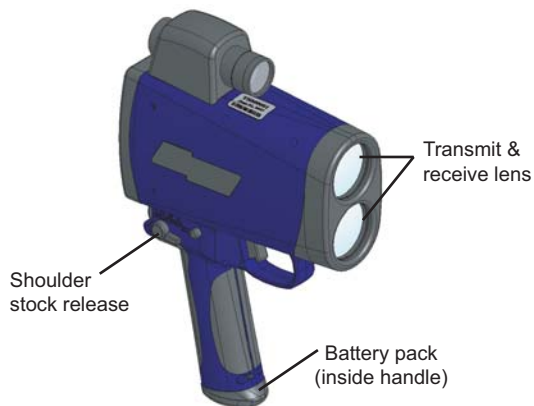


LTI Part #	Option Description
7005800	LTI 20-20 TruSpeed dc Speed Device
7035116	TruLogger Software with 4pin to DB9 cable
3124664	Carrying Case w/ Foam
7024780	Shoulder Stock
7024785	TruSpeed Tripod Yoke Mount
3504669	TruSpeed 3.5x Magnifying Scope
7035110	Premium Hard Case w/ Foam
3204694	Anti Jam/Defeat Software
3204695	Longer Range Software (up to 1200 meters)

For a quick and easy reference of all the available accessories and upgrades, please use this list when placing your order!

Hardware Specifications:

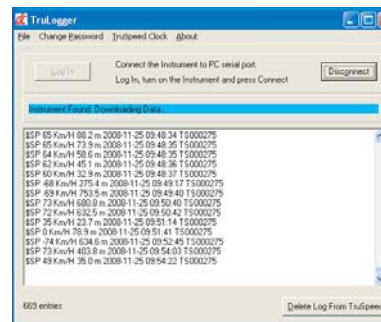
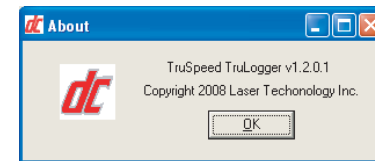
Weight:	1.25 kg (with batteries)
Size:	20 x 8 x 30 cm
Acquisition Time:	0.33 seconds
Speed Measurement Range:	±322 km/h
Speed Accuracy:	±2 Km/H
Minimum Range	
Speed Mode:	15 meters
Weather Mode:	61 meters
Continuous Mode:	15 meters
Maximum Range:	
Standard:	650 meters
Long Range Option:	1,200 meters
Range Accuracy:	±15 cm
Range Resolution:	0.1 meter
Real Time Clock Accuracy:	
	20 parts per million (ppm) over the full operating temperature of -30° C to + 60° C (±10 minutes per year)
Data Storage:	6,000 records stored in internal memory.
	Note: Oldest record is overwritten when capacity has been reached. Records are encrypted and access is password protected.
Beam Divergence:	2.5 milliradians nominal
Laser Wavelength:	905 nanometers nominal
Temperature Range:	-30° C to +60° C
Power:	Two alkaline, NiCad, or NiMH rechargeable C-cell batteries providing up to 25 hours of cordless operation.
Eye Safety:	FDA Class 1 (CFR 21)
Environment:	Water resistant - NEMA 4 and IP 55
Construction:	Composite Polycarbonate Outer Shell with Aluminum Internal Chassis.



TruLogger Specifications:

The TruSpeed dc connects to the Office PC using an LTI 4-Pin to DB9 download cable. The suggested hardware and software components include:

- Operating System: Microsoft Windows® 2000, Microsoft Windows® XP or Microsoft Windows® Vista
- CD ROM Drive
- Serial Port or USB Port with Serial Adapter



The following Information is collected:

- \$SP = measurement type (speed)
- 49 Km/H = vehicle speed (approaching)
- 535.4 m = distance to vehicle
- 2008-11-25 = date
- 09:54:22 = time (24 hour format)
- TS000275 = laser serial number