

AR SERIES 50 Hz

MULTI-POSITION
ELECTRIC AIR HANDLER

1½ TO 5 TON



The AR Series electric air handler is designed for compact, versatile upflow, right or left horizontal and downflow applications. It may be located in a closet, utility room, attic, crawl space or basement.

Standard Features

- Equipped with a check flowrate for heat pump and cooling operation
- Direct-drive, multi-speed motor to permit air volume variation for heating and cooling application needs
- Built-in coil with horizontal and vertical thermoplastic drain pans with secondary drains
- Copper tube, aluminum fin coil
- Built-in filter provision
- Power supply entry at top
- Low-voltage entry on left side and top
- Transformer and blower time delay on all units

Cabinet Features

- Fully insulated steel cabinet
- G90 galvanized stucco finish with painted front panels

Accessories

- Pre-tested, pre-wired heat kits in 3, 5, 6, 8, 10, 15, 20 kW, single-phase models; featuring electric heat limit control, rust-resistant nickel chromium heating elements and select models with circuit breakers
- Permanent washable plastic airfilters (FIL18-32, FIL36-42, FIL48-61)

PRODUCT SPECIFICATIONS

SPECIFICATIONS

	A24-00-2R	A36-00-2R	A48-00-2R	A60-00-2R
Electrical Data				
MCA ¹	1.0/1.0	1.8/1.8	1.8/1.8	4.3/4.3
MOP ²	15/15	15/15	15/15	15/15
Min./Max. VAC	198/264	198/264	198/264	198/264
Blower Motor				
FLA	0.85	1.4	1.4	3.4
HP	1/8	1/4	1/4	3/4
Physical Data				
Blower				
Diameter	9½" [24.1]	9½" [24.1]	9½" [24.1]	10⅝" [26.9]
Width	6" [15.2]	8" [20.5]	8" [20.5]	10⅝" [26.9]
Coil Drain Connect FPT	¾" [1.9]	¾" [1.9]	¾" [1.9]	¾" [1.9]
Refrigerant Connection				
Liquid	⅜" [.95]	⅜" [.95]	⅜" [.95]	⅜" [.95]
Suction	¾" [1.9]	¾" [1.9]	⅞" [2.2]	⅞" [2.2]
Ship Weight	106 lbs. [48.0]	141 lbs. [63.9]	173 lbs. [78.4]	192 lbs. [87.0]

1. Minimum Circuit Ampacity @220/240V
 2. Maximum Overcurrent Protection @220/240V
 [] Designates metric equivalents

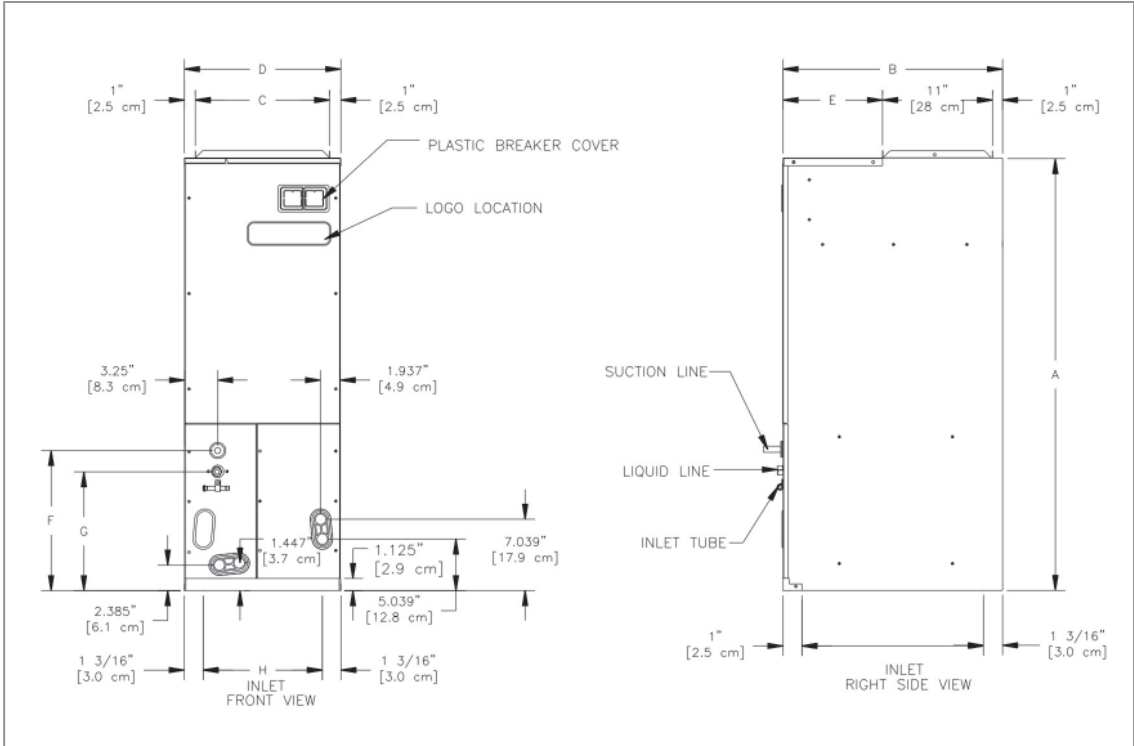
BLOWER PERFORMANCE

Model	Speed	Airflow Delivered against External Static Pressure				
		.1 [2.5]	.2 [5.0]	.3 [7.5]	.4 [10.0]	.5 [12.5]
A24-00-2R	HIGH	960 [453]	930 [439]	890 [420]	840 [397]	780 [368]
	LOW	810 [382]	780 [368]	760 [358]	720 [340]	670 [316]
A36-00-2R	HIGH	1,450 [685]	1,415 [668]	1,360 [642]	1,280 [604]	1,200 [567]
	LOW	1,260 [595]	1,240 [585]	1,200 [566]	1,145 [541]	1,060 [500]
A48-00-2R	HIGH	1,670 [789]	1,610 [760]	1,500 [708]	1,440 [680]	1,370 [647]
	LOW	1,310 [619]	1,300 [614]	1,290 [609]	1,280 [604]	1,260 [595]
A60-00-2R	HIGH	2,170 [1,025]	2,080 [982]	2,000 [944]	1,920 [907]	1,850 [874]
	LOW	1,900 [897]	1,810 [855]	1,700 [803]	1,590 [751]	1,500 [708]

[] Designates metric equivalents
 Assumes dry coil with Filter in Place

SCFM Correction for Wet Coil - 4%.

DIMENSIONS



Base Model	A	B	C	D	E	F	G	H	J	K
A24-00-2R	41.125 [107.0 cm]	22 [55.9 cm]	13.5 [34.3 cm]	15.5 [39.4 cm]	10 [25.4 cm]	13.375 [34.0 cm]	10.811 [27.5 cm]	13.125 [33.3 cm]	19.812 [50.3 cm]	3.563 [9.05CM]
A36-00-2R	46.75 [118.7 cm]	22 [55.9 cm]	17.5 [44.5 cm]	19.5 [49.5 cm]	10 [25.4 cm]	13.375 [34.0 cm]	10.811 [27.5 cm]	17.125 [43.5 cm]	19.812 [50.3 cm]	3.563 [9.05CM]
A48-00-2R A60-00-2R	53.25 [135.3 cm]	24 [61.0 cm]	20 [50.8 cm]	22 [55.9 cm]	12 [30.5 cm]	14.5 [36.8 cm]	11.935 [30.3 cm]	19.625 [49.8 cm]	21.812 [55.4 cm]	3.343 [8.49CM]

[] DESIGNATES METRIC EQUIVALENTS

PERFORMANCE RATINGS

Model	Nominal Cooling Capacity (tons)	Seasonal Efficiency AFUE%
A24-00-2R	2	100.0
A36-00-2R	3	100.0
A48-00-2R	4	100.0
A60-00-2R	5	100.0

PRODUCT SPECIFICATIONS

HEATER KIT APPLICATION OPTIONS

	A24-00-2R	A36-00-2R	A48-00-2R	A60-00-2R
HKR-03*	X	X	X	X
HKR-05*/05C*	X	X	X	X
HKR-06*	X	X	X	X
HKR-08*/-08C*	X	X	X	X
HKR-10*/-10C*	X	X	X	X
HKR-15C*		X	X	X
HKR-20C*		X	X	X

* Revision level that may or may not be designated

C Circuit breaker option

^ Heat Kit requires three-phase power supply

Quality Makes the Difference!

All of our systems are designed and manufactured with the same high-quality standards, regardless of size or efficiency. We have designed these units to significantly reduce the most frequent causes of product failure. They are simple to service and forgiving to operate. We use quality materials and components. Finally, every unit is run-tested before it leaves the factory. That's why we know...there's no better quality.

Visit our website at
www.goodmanmfg.com for information on:
Goodman Products • Customer Services • Parts

Goodman Manufacturing Company, L.P.
2550 North Loop West, Suite 400
Houston, Texas 77092 USA

Goodman Manufacturing Company, L.P., reserves the right to discontinue, or change at any time, specifications or designs without notice or without incurring obligations.
Copyright © 2003 Goodman Manufacturing Company, L.P. • Houston, Texas • Printed in the USA. • Goodman products are made proudly in the USA.